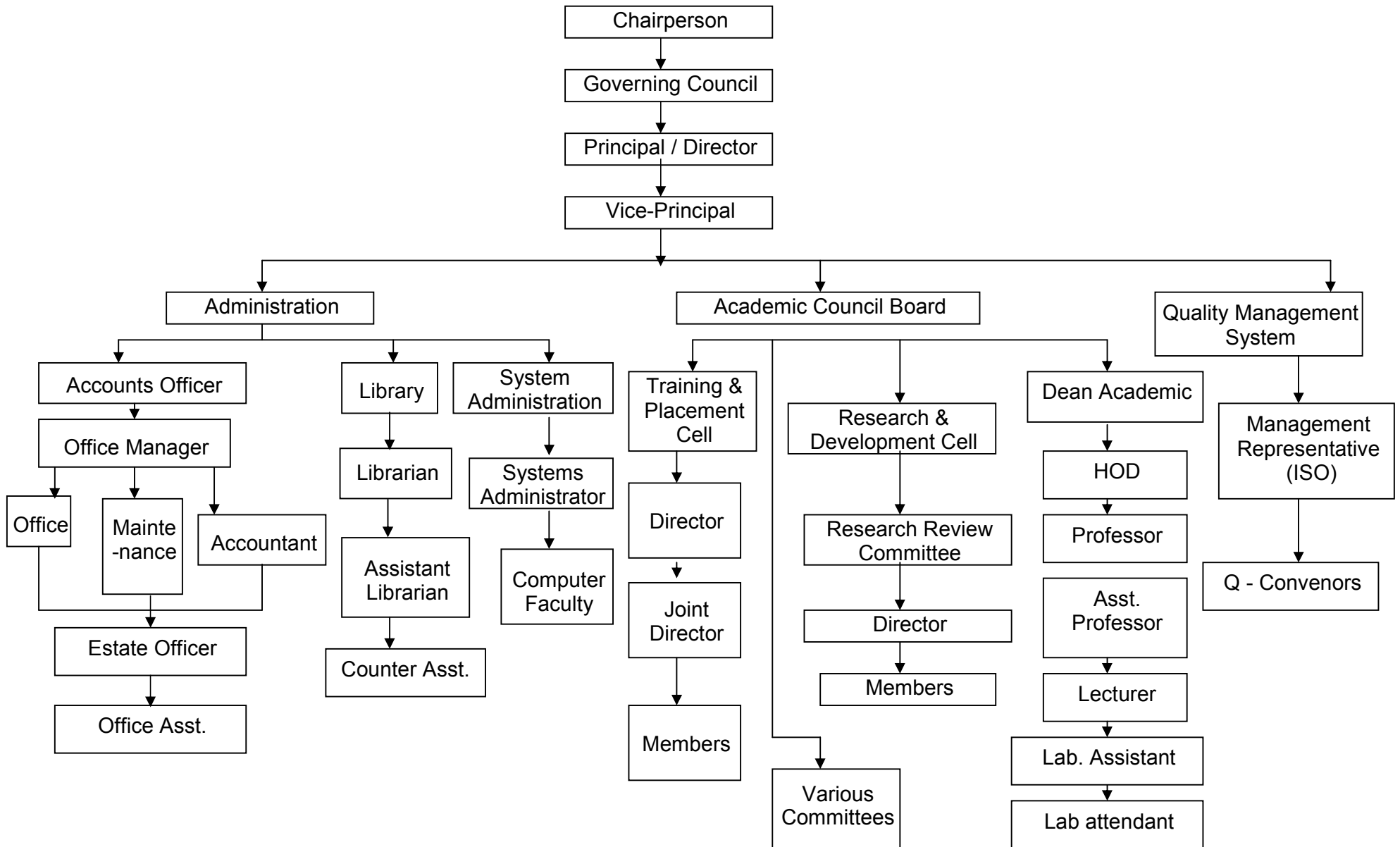


ORGANISATIONAL CHART & PROCESSES



ANNEXURE – 1

Enclosure

Major Processes

Academic

- ❖ Academic Council
- ❖ Admission Committee (Staff)
- ❖ Examination Cell (Staff)
- ❖ Library Committee (Staff)
- ❖ ISTE chapter (Staff)
- ❖ Training and Placement cell (Staff and students)
- ❖ Concurrent Career Development Cell (CCDP) (Staff and Students)
- ❖ Counseling (Student)
- ❖ Research and Development cell (Staff and Students)
- ❖ Research Review Committee (Staff)
- ❖ Student's feedback process (Staff and Students)
- ❖ Risk management cell (Staff and Students)

Non academic

- ❖ National Service Scheme (Students)
- ❖ Youth Red Cross (Students)
- ❖ ISTE student Chapter
- ❖ Journal Club (Staff)
- ❖ Alumni association (Students)
- ❖ Sports committee (Students and Staff)
- ❖ Cultural committee (Students)